

Pitch:3.96 (0.156")  
Wire To Board Single Row DIP Type

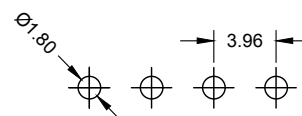
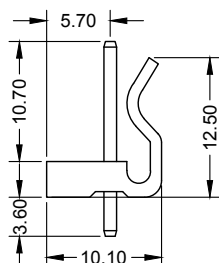
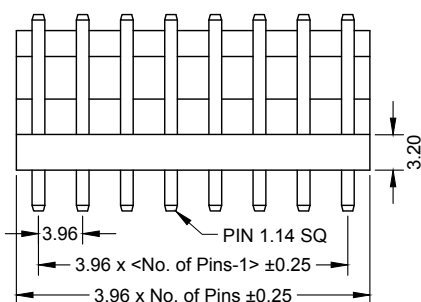


**Materials**

Contact Material: Brass  
Insulator Material: PA66  
Flame Retardant Grade: UL 94V-0

**Specifications**

Current Rating: 5.0 A  
Voltage Rating: 250 V  
Insulation Resistance: 1000MΩ min  
Withstand Voltage: 1500V AC  
Contact Resistance: 20mΩ max  
Operating Temperature: -25°C~85°C



Recommended P.C.Board Layout

**Ordering Information**

MWJA101	-	XX	XX	A001	X	X
		No. of Pins 02 ~ 20	Standard Plating 01=Tin 02=Gold Flash ...		Material A=PBT B=PA6T C=LCP ...	Colour 1=Black 2=White ...

Pitch:3.96 (0.156")  
Wire To Board Single Row DIP Type

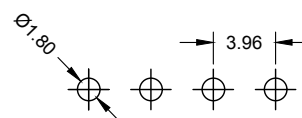
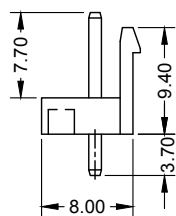
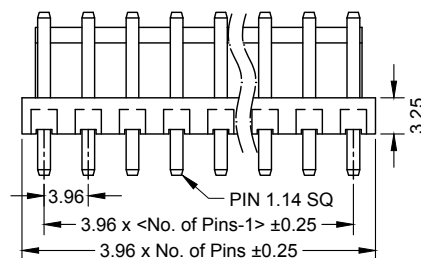
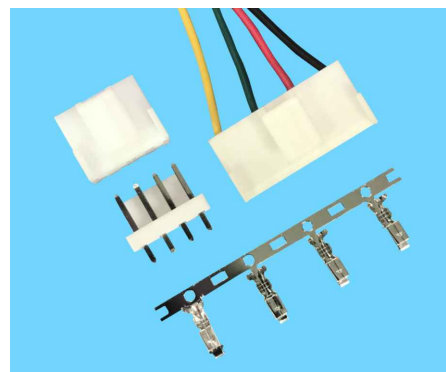


**Materials**

Contact Material: Brass  
Insulator Material: PA66  
Flame Retardant Grade: UL 94V-0

**Specifications**

Current Rating: 5.0 A  
Voltage Rating: 250 V  
Insulation Resistance: 1000MΩ min  
Withstand Voltage: 1500V AC  
Contact Resistance: 20mΩ max  
Operating Temperature: -25°C~85°C



Recommended P.C.Board Layout

**Ordering Information**

MWJA102	-	XX	XX	A001	X	X
		No. of Pins 02 ~ 15	Standard Plating 01=Tin 02=Gold Flash ...		Material A=PBT B=PA6T C=LCP ...	Colour 1=Black 2=White ...