

Pitch:1.50mm (0.059")
Wire To Board Single Row DIP Type

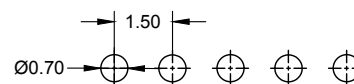
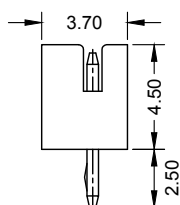
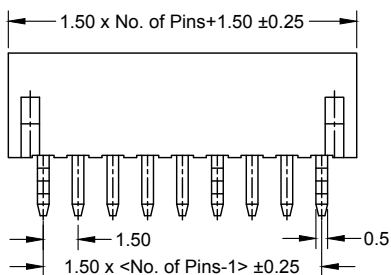
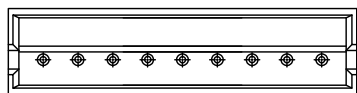
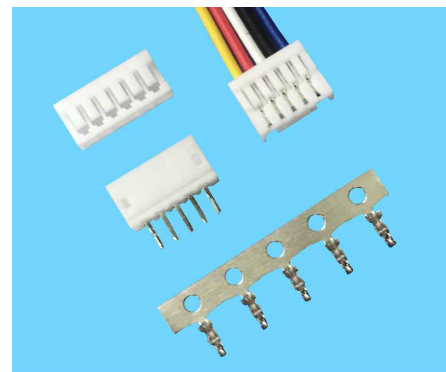


Materials

Contact Material: Brass
Insulator Material: PA66
Flame Retardant Grade: UL 94V-0

Specifications

Current Rating: 1.0 A
Voltage Rating: 250 V
Insulation Resistance: 1000MΩ min
Withstand Voltage: 500V AC
Contact Resistance: 20mΩ max
Operating Temperature: -25°C~85°C



Recommended P.C.Board Layout

Ordering Information

MWZA101	-	XX	XX	A001	X	X
		No. of Pins 02 ~ 16	Standard Plating 01=Tin 02=Gold Flash ...		Material A=PBT B=PA6T C=LCP ...	Colour 1=Black 2=White ...

Pitch: 1.50mm (0.059")
Wire To Board Single Row SMT Type

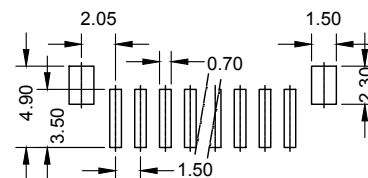
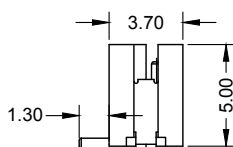
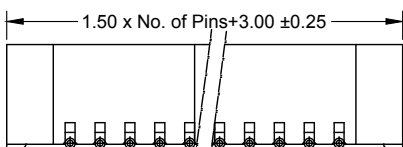
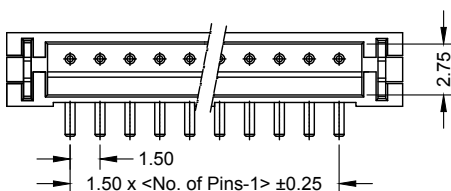
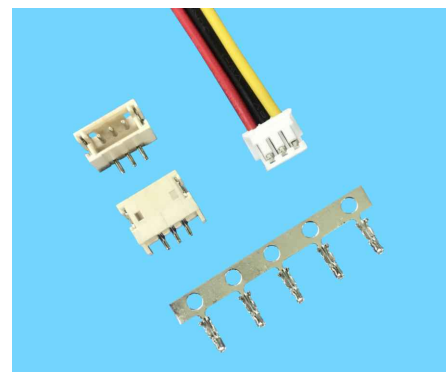


Materials

Contact Material: Brass
Insulator Material: PA66/PA6T/LCP
Flame Retardant Grade: UL 94V-0

Specifications

Current Rating: 1.0 A
Voltage Rating: 250 V
Insulation Resistance: 1000MΩ min
Withstand Voltage: 500V AC
Contact Resistance: 20mΩ max
Operating Temperature: -25°C~85°C



Recommended P.C.Board Layout

Ordering Information

MWZC101	-	XX	XX	A001	X	X
		No. of Pins 02 ~ 13	Standard Plating 01=Tin 02=Gold Flash ...		Material A=PBT B=PA6T C=LCP ...	Colour 1=Black 2=White ...