

Pitch:2.54X2.54mm(0.1"X0.1")  
Female Header Dual Rows Dip Type

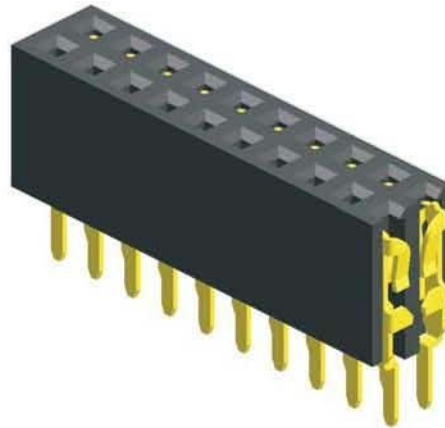
**MXCONN**  
MFHA208 Series

**Specifications**

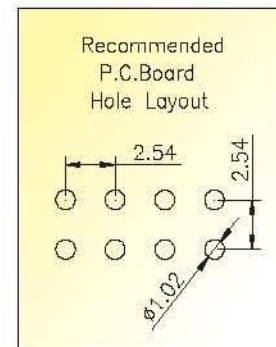
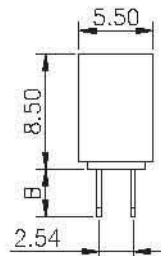
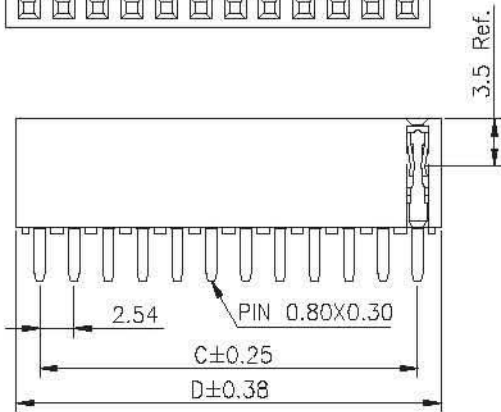
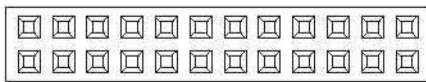
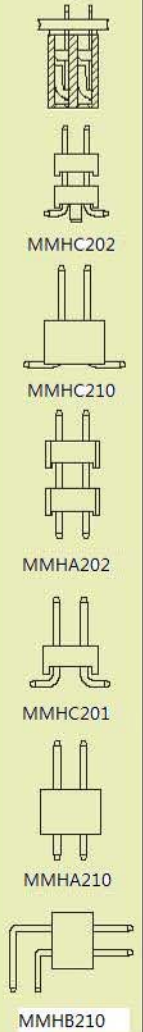
Current Rating: 3.0 Ampere  
Insulation Resistance: 1000MΩ Min  
Dielectric Withstanding: 600V AC  
Contact Resistance: 20mΩ Max  
Operating Temperature: -40°C to +105°C

**Materials**

Contact Material: Phosphor Bronze  
Insulation Material: Polyester,UL 94V-0  
PBT



Mating with



PS:Suggested Mating Pin Length:5.0~8.0mm

| No. of Pins/Row | Dimension Information |       | No. of Pins/Row | Dimension Information |       | No. of Pins/Row | Dimension Information |       | No. of Pins/Row | Dimension Information |        |
|-----------------|-----------------------|-------|-----------------|-----------------------|-------|-----------------|-----------------------|-------|-----------------|-----------------------|--------|
|                 | C                     | D     |                 | C                     | D     |                 | C                     | D     |                 | C                     | D      |
| 02              | 2.54                  | 5.88  | 12              | 27.94                 | 31.28 | 22              | 53.34                 | 56.68 | 32              | 78.74                 | 82.08  |
| 03              | 5.08                  | 8.42  | 13              | 30.48                 | 33.82 | 23              | 55.88                 | 59.22 | 33              | 81.28                 | 84.62  |
| 04              | 7.62                  | 10.96 | 14              | 33.02                 | 36.36 | 24              | 58.42                 | 61.76 | 34              | 83.82                 | 87.16  |
| 05              | 10.16                 | 13.50 | 15              | 35.56                 | 38.90 | 25              | 60.96                 | 64.30 | 35              | 86.36                 | 89.70  |
| 06              | 12.70                 | 16.04 | 16              | 38.10                 | 41.44 | 26              | 63.50                 | 66.84 | 36              | 88.90                 | 92.24  |
| 07              | 15.24                 | 18.58 | 17              | 40.64                 | 43.98 | 27              | 66.04                 | 69.38 | 37              | 91.44                 | 94.78  |
| 08              | 17.78                 | 21.12 | 18              | 43.18                 | 46.52 | 28              | 68.58                 | 71.92 | 38              | 93.98                 | 97.32  |
| 09              | 20.32                 | 23.66 | 19              | 45.72                 | 49.06 | 29              | 71.12                 | 74.46 | 39              | 96.52                 | 99.86  |
| 10              | 22.86                 | 26.20 | 20              | 48.26                 | 51.60 | 30              | 73.66                 | 77.00 | 40              | 99.06                 | 102.40 |
| 11              | 25.40                 | 28.74 | 21              | 50.80                 | 54.14 | 31              | 76.20                 | 79.54 |                 |                       |        |

**Ordering Information**

MFHA208 - **XX** **XX** A **XXX**  
 No. of Pins per Row    Standard Plating    Pin Length ( B )  
 02~40    02 :Gold Flash    001 : B=3.50  
    Selective Plating    Selective Length  
    01 :Tin    Custom Length Available  
    05 :Gold Flash / Tin

\* Standard Packaging:Tube