

Pitch:2.00X2.00mm(0.079"X0.079")  
 Female Header Dual Rows With Post S.M.T Type

**MXCONN**  
 MFFC201 Series

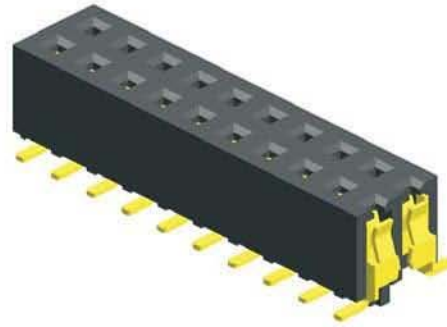
2.00 Female S.M.T Type

**Specifications**

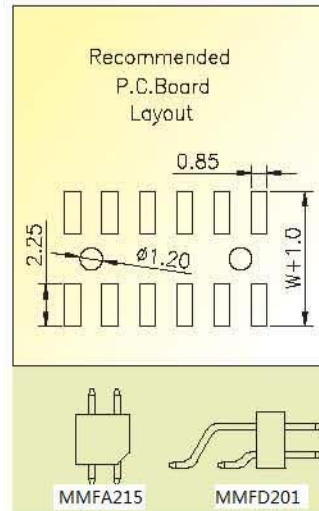
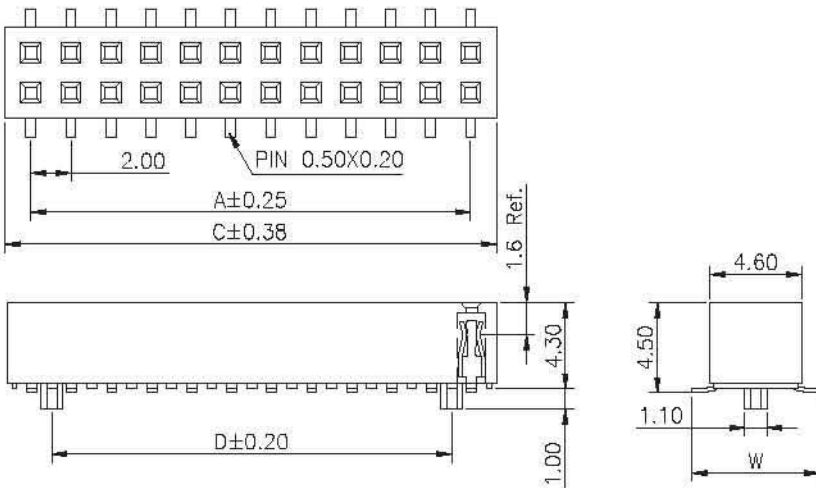
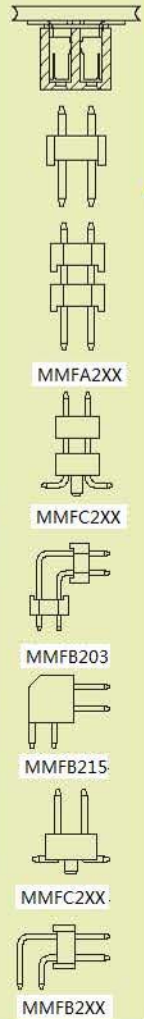
- Current Rating: 2.0 Ampere
- Insulation Resistance: 1000MΩ Min
- Dielectric Withstanding: 500V AC
- Contact Resistance: 20mΩ Max
- Operating Temperature: -40°C to +105°C

**Materials**

- Contact Material: Phosphor Bronze
- Insulation Material: Polyester,UL 94V-0  
 NYLON 6T



Mating with



PS:Suggested Mating Pin Length:3.0~4.0mm

No. of Pins/Row	Dimension Information			No. of Pins/Row	Dimension Information			No. of Pins/Row	Dimension Information			No. of Pins/Row	Dimension Information		
	A	C	D		A	C	D		A	C	D		A	C	D
03	4.00	6.60	2.00	13	24.00	26.60	22.00	23	44.00	46.60	42.00	33	64.00	66.60	62.00
04	6.00	8.60	4.00	14	26.00	28.60	24.00	24	46.00	48.60	44.00	34	66.00	68.60	64.00
05	8.00	10.60	6.00	15	14.00	30.60	26.00	25	48.00	50.60	46.00	35	68.00	70.60	66.00
06	10.00	12.60	8.00	16	15.00	32.60	28.00	26	50.00	52.60	48.00	36	70.00	72.60	68.00
07	12.00	14.60	10.00	17	16.00	34.60	30.00	27	52.00	54.60	50.00	37	72.00	74.60	70.00
08	14.00	16.60	12.00	18	17.00	36.60	32.00	28	54.00	56.60	52.00	38	74.00	76.60	72.00
09	16.00	18.60	14.00	19	18.00	38.60	34.00	29	56.00	58.60	54.00	39	76.00	78.60	74.00
10	18.00	20.60	16.00	20	19.00	40.60	36.00	30	58.00	60.60	56.00	40	78.00	80.60	76.00
11	20.00	22.60	18.00	21	20.00	42.60	38.00	31	60.00	62.60	58.00				
12	22.00	24.60	20.00	22	21.00	44.60	40.00	32	62.00	64.60	60.00				

**Ordering Information**

- MFFC201 - **XX** **XX** **X** **XXX**
- No. of Pins per Row: 03~40
  - Standard Plating: 02 :Gold Flash
  - Selective Plating: 01 :Tin, 05 :Gold Flash / Tin
  - A : W / O POST
  - C : WITH OPST
  - Pin Length ( W )
    - A 001 : W=6.40
    - C 002 : W=6.40
    - C 007 : W=7.20
  - Selective Length
  - Custom Length Available

\*Standard Packaging:Tube