

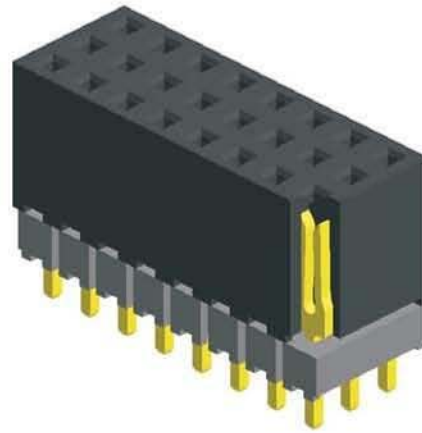
Pitch:2.00mm(0.079")  
Female Header Triple Row Elevated Type

**Specifications**

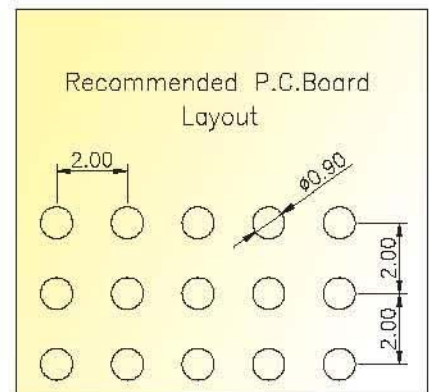
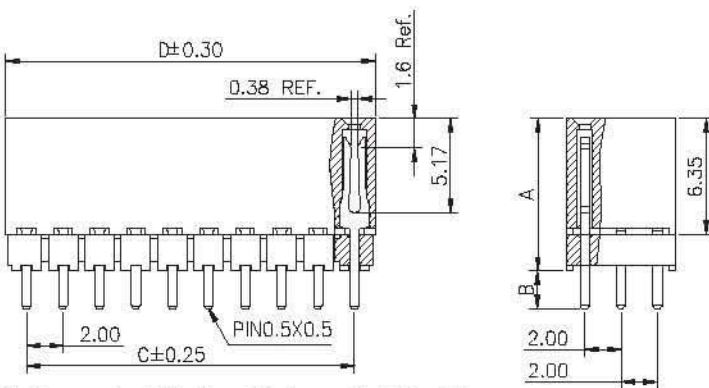
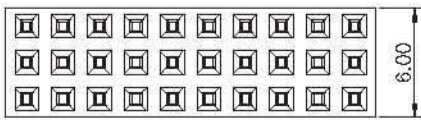
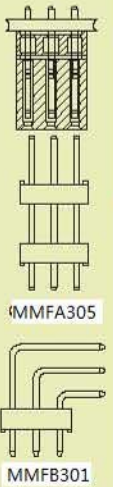
Current Rating: 2.0 Ampere  
Insulation Resistance: 1000MΩ Min  
Dielectric Withstanding: 500V AC  
Contact Resistance: 20mΩ Max  
Operating Temperature: -40°C to +105°C

**Materials**

Contact Material: Phosphor Bronze  
Insulation Material: Polyester,UL 94V-0  
NYLON 6T



Mating with



PS:Suggested Mating Pin Length:3.0~4.9mm

No. of Pins/Row	Dimension Information		No. of Pins/Row	Dimension Information		No. of Pins/Row	Dimension Information		No. of Pins/Row	Dimension Information	
	C	D		C	D		C	D		C	D
02	2.00	4.30	12	22.00	24.30	22	42.00	44.30	32	62.00	64.30
03	4.00	6.30	13	24.00	26.30	23	44.00	46.30	33	64.00	66.30
04	6.00	8.30	14	26.00	28.30	24	46.00	48.30	34	66.00	68.30
05	8.00	10.30	15	28.00	30.30	25	48.00	50.30	35	68.00	70.30
06	10.00	12.30	16	30.00	32.30	26	50.00	52.30	36	70.00	72.30
07	12.00	14.30	17	32.00	34.30	27	52.00	54.30	37	72.00	74.30
08	14.00	16.30	18	34.00	36.30	28	54.00	56.30	38	74.00	76.30
09	16.00	18.30	19	36.00	38.30	29	56.00	58.30	39	76.00	78.30
10	18.00	20.30	20	38.00	40.30	30	58.00	60.30	40	78.00	80.30
11	20.00	22.30	21	40.00	42.30	31	60.00	62.30			

**Ordering Information**

MFFA302 -	XX	XX	A	XXX
	No. of Pins per Row	Standard Plating		Pin Length ( A / B )
	02 ~40	02 :Gold Flash		001 : A=8.35,B=2.08
		Selective Plating		Selective Length
		01 :Tin		Custom Length Available
		05 :Gold Flash / Tin		

\* Standard Packaging:Tube