

# Pitch:2.00mm(0.079") Female Header Single Row Straight Type

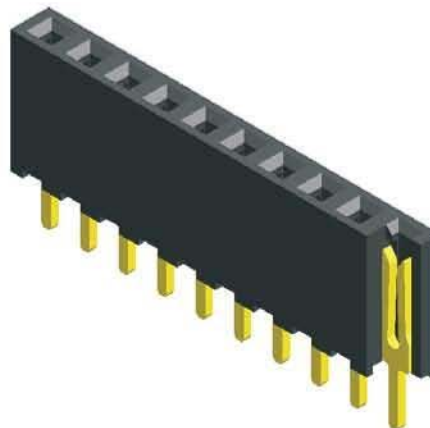
**MXCONN**  
MFFA104 Series

## Specifications

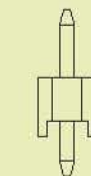
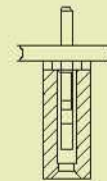
Current Rating: 2.0 Ampere  
 Insulation Resistance: 1000MΩ Min  
 Dielectric Withstanding: 500V AC  
 Contact Resistance: 20mΩ Max  
 Operating Temperature: -40°C to +105°C

## Materials

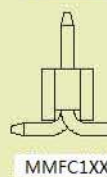
Contact Material: Phosphor Bronze  
 Insulation Material: Polyester,UL 94V-0  
 LCP



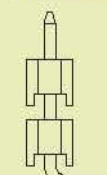
Mating with



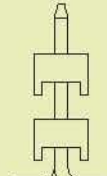
MMFA1XX



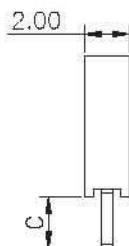
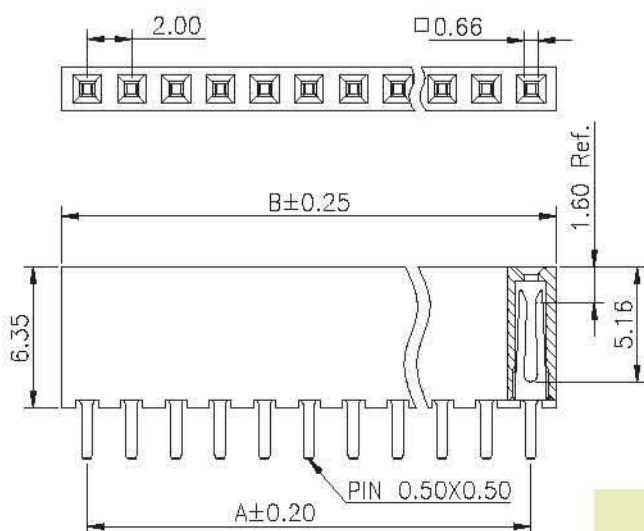
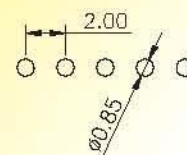
MMFC1XX



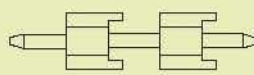
MMFB106



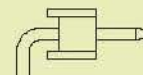
MMFC104


 Recommended  
 P.C.Board  
 Hole Layout


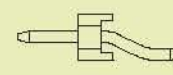
PS:Suggested Mating Pin Length:3.0~4.9mm



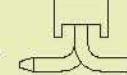
MMFA1XX



MMFB1XX



MFFD102



MMFC104

No. of Pins/Row	Dimension Information		No. of Pins/Row	Dimension Information		No. of Pins/Row	Dimension Information		No. of Pins/Row	Dimension Information	
	A	B		A	B		A	B		A	B
02	2.00	4.30	12	22.00	24.30	22	42.00	44.30	32	62.00	64.30
03	4.00	6.30	13	24.00	26.30	23	44.00	46.30	33	64.00	66.30
04	6.00	8.30	14	26.00	28.30	24	46.00	48.30	34	66.00	68.30
05	8.00	10.30	15	28.00	30.30	25	48.00	50.30	35	68.00	70.30
06	10.00	12.30	16	30.00	32.30	26	50.00	52.30	36	70.00	72.30
07	12.00	14.30	17	32.00	34.30	27	52.00	54.30	37	72.00	74.30
08	14.00	16.30	18	34.00	36.30	28	54.00	56.30	38	74.00	76.30
09	16.00	18.30	19	36.00	38.30	29	56.00	58.30	39	76.00	78.30
10	18.00	20.30	20	38.00	40.30	30	58.00	60.30	40	78.00	80.30
11	20.00	22.30	21	40.00	42.30	31	60.00	62.30			

## Ordering Information

MFFA104 - **XX** **XX** A **XXX**  
 No. of Pins per Row    Standard Plating    Pin Length (C)  
 02~40    02 :Gold Flash    002 :C=2.30  
           Selective Plating    Selective Length  
           01 :Tin    Custom Length Available  
           05 :Gold Flash / Tin

\*Standard Packaging:Box

Due to technical progress,all designs,Specifications and components are subject to change without notice