

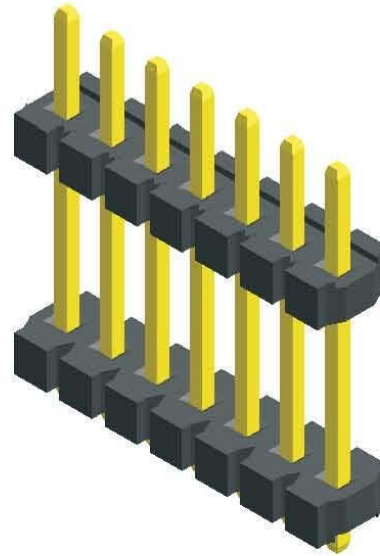
**Pitch:3.96mm(0.156")**  
**Power Socket Single Row Dip Type**

**Specifications**

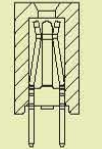
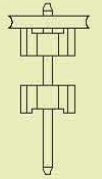
Current Rating: 7.9 Ampere  
 Insulation Resistance: 1000MΩ Min  
 Dielectric Withstanding: 1000V AC  
 Contact Resistance: 30mΩ Max  
 Operating Temperature: -40°C to +105°C

**Materials**

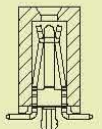
Contact Material: Phosphor Bronze  
 Insulation Material: Polyester,UL 94V-0  
 LCP



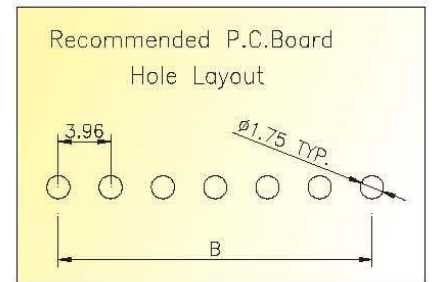
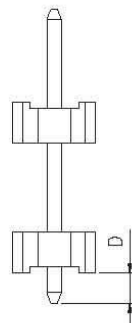
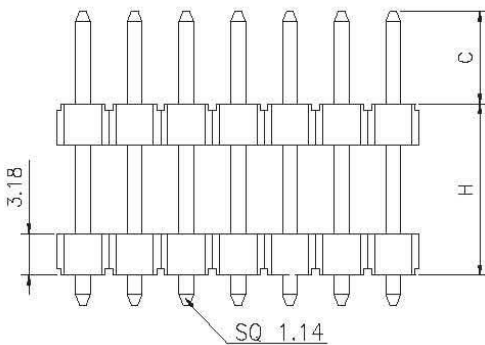
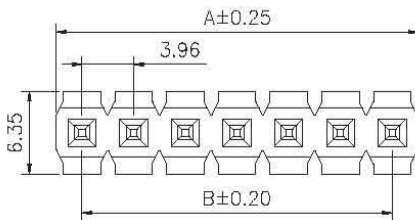
Mating with



MFJA102



MFJC101



No. of Pins/Row	Dimension Information		No. of Pins/Row	Dimension Information		No. of Pins/Row	Dimension Information		No. of Pins/Row	Dimension Information	
	A	B		A	B		A	B		A	B
02	7.92	3.96	08	31.68	27.72	14	55.44	51.48	20	79.20	75.24
03	11.88	7.92	09	35.64	31.68	15	59.40	55.44	21	83.16	79.20
04	15.84	11.88	10	39.60	35.64	16	63.36	59.40	22	87.12	83.16
05	19.80	15.84	11	43.56	39.60	17	67.32	63.36	23	91.08	87.12
06	23.76	19.80	12	47.52	43.56	18	71.28	67.32	24	95.04	91.08
07	27.72	23.76	13	51.48	47.52	19	75.24	71.28			

**Ordering Information**

MMJA104 - **XX** **XX** A **XXX**  
 No. of Pins per Row Standard Plating Pin Length ( C / D / H )  
 02-24 02 :Gold Flash 001 :C=7.10,D=2.30,H=19.80  
 Selective Plating Selective Length  
 01 :Tin Custom Length Available  
 05 :Gold Flash / Tin

\* Standard Packaging: Box