

Pitch:2.00X2.00mm(0.079"X0.079")
Shrouded Header S.M.T Type Elevator

MXCONN
MMFC221 Series

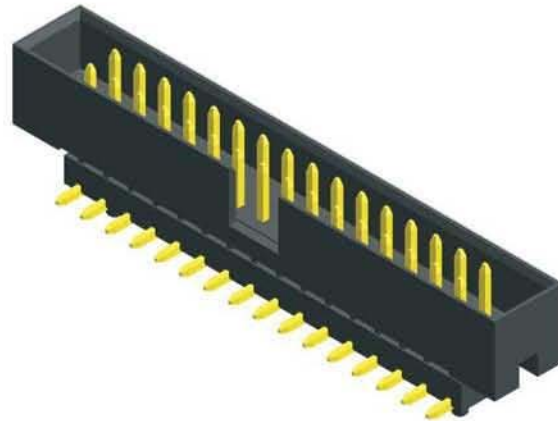
2.00 Male S.M.T Type

Specifications

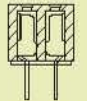
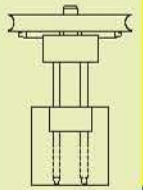
Current Rating: 2.0 Ampere
Insulation Resistance: 1000MΩ Min
Dielectric Withstanding: 500V AC
Contact Resistance: 20mΩ Max
Operating Temperature: -40°C to +105°C

Materials

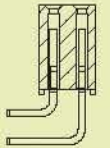
Contact Material: Brass
Insulation Material: Polyester,UL 94V-0
NYLON 6T



Mating with



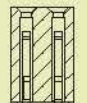
MFFA2XX



MFFB207



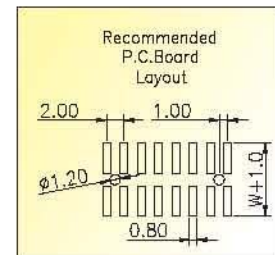
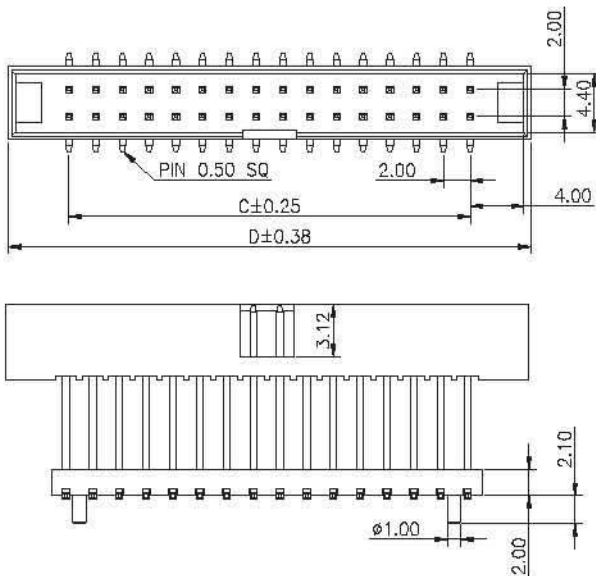
MFFC215



MFFA204



MFFC2XX



No. of Pins/Row	Dimension Information		No. of Pins/Row	Dimension Information		No. of Pins/Row	Dimension Information		No. of Pins/Row	Dimension Information	
	C	D		C	D		C	D		C	D
-	-	-	10	18.00	27.10	16	30.00	37.10	22	42.00	51.10
05	8.00	17.10	11	20.00	29.10	17	32.00	39.10	23	44.00	53.10
06	10.00	19.10	12	22.00	31.10	18	34.00	41.10	24	46.00	55.10
07	12.00	21.10	13	24.00	33.10	19	36.00	43.10	25	48.00	57.10
08	14.00	23.10	14	26.00	35.10	20	38.00	45.10			
09	16.00	25.10	15	28.00	37.10	21	40.00	47.10			

Ordering Information

MMFC221 - **XX** **XX** B **XXX**
 No. of Pins per Row Standard Plating Pin Length (A / W)
 05-25 02 :Gold Flash 006 :A=13.70,W=7.80
 Selective Plating Selective Length
 01 :Tin Custom Length Available
 05 :Gold Flash / Tin

* Standard Packaging:Tube