

Pitch:2.00X2.00mm(0.079"X0.079") Box Header S.M.T Type

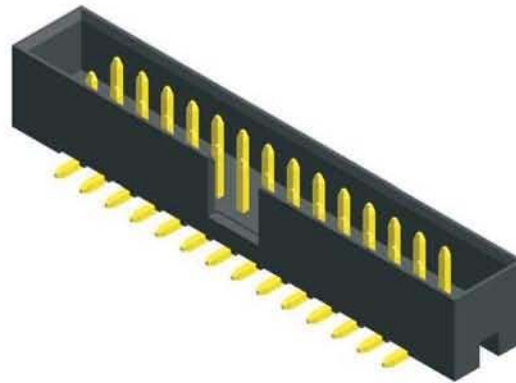
MXCONN
MMFC220 Series

Specifications

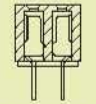
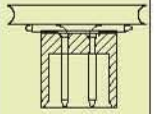
Current Rating: 2.0 Ampere
Insulation Resistance: 1000MΩ Min
Dielectric Withstanding: 500V AC
Contact Resistance: 20mΩ Max
Operating Temperature: -40°C to +105°C

Materials

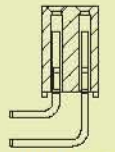
Contact Material: Brass
Insulation Material: Polyester,UL 94V-0
NYLON 6T



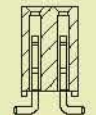
Mating with



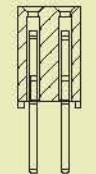
VMFFA2XX



MFFB207



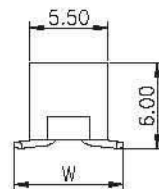
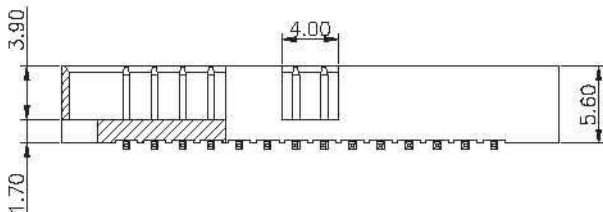
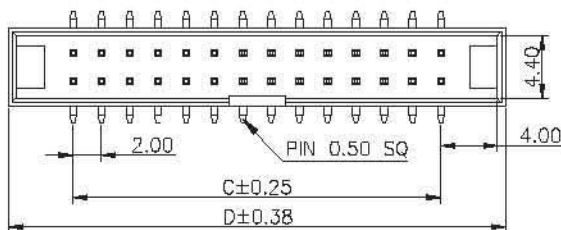
MFFC215



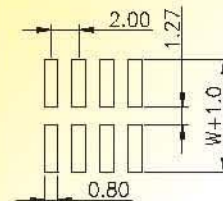
MFFA204



MFFC2XX



Recommended
P.C.Board
Layout



No. of Pins/Row	Dimension Information		No. of Pins/Row	Dimension Information		No. of Pins/Row	Dimension Information		No. of Pins/Row	Dimension Information	
	C	D		C	D		C	D		C	D
04	6.00	15.10	10	18.00	27.10	16	30.00	39.10	22	42.00	51.10
05	8.00	17.10	11	20.00	29.10	17	32.00	41.10	23	44.00	53.10
06	10.00	19.10	12	22.00	31.10	18	34.00	43.10	24	46.00	55.10
07	12.00	21.10	13	24.00	33.10	19	36.00	45.10	25	48.00	57.10
08	14.00	23.10	14	26.00	35.10	20	38.00	47.10			
09	16.00	25.10	15	28.00	37.10	21	40.00	49.10			

Ordering Information

MMFC220-	XX	XX	A	XXX
	No. of Pins per Row	Standard Plating		Pin Length (W)
	04 ~25	02 :Gold Flash		001 :W=7.70
		Selective Plating		Selective Length
		01 :Tin		Custom Length Available
		05 :Gold Flash / Tin		

* Standard Packaging: Tube

Due to technical progress, all designs, Specifications and components are subject to change without notice