

# Pitch:2.00X2.00mm(0.079"X0.079") Box Header With Lock Right Angle Type

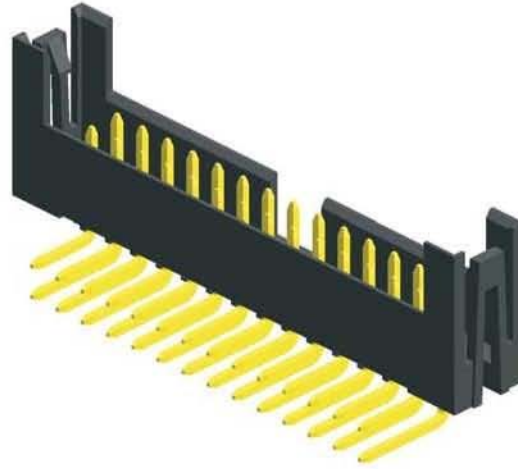
**MXCONN**  
MMFB218 Series

## Specifications

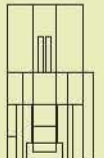
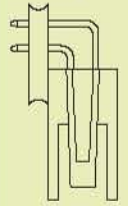
Current Rating: 2.0 Ampere  
Insulation Resistance: 1000MΩ Min  
Dielectric Withstanding: 500V AC  
Contact Resistance: 20mΩ Max  
Operating Temperature: -40°C to +105°C

## Materials

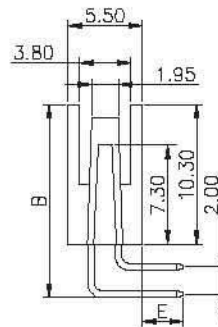
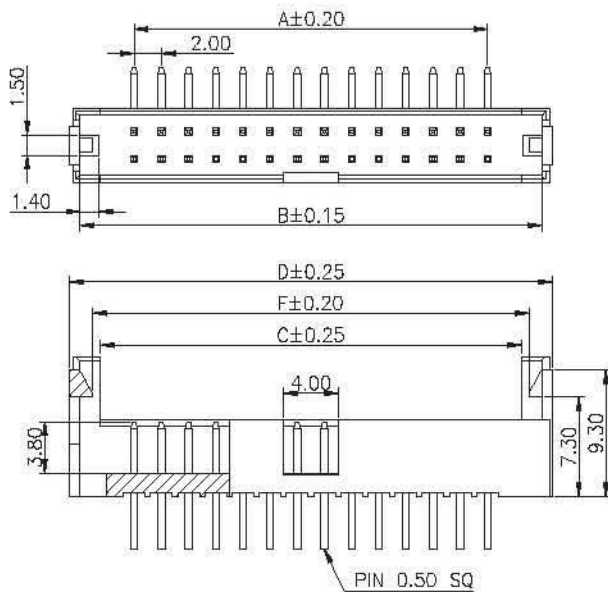
Contact Material: Brass  
Insulation Material: Polyester,UL 94V-0  
NYLON 6T



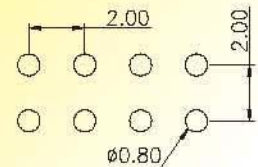
Mating with



MFFF216



Recommended  
P.C.Board  
Hole Layout



No.1 of Pins/Row	Dimension Information					No.1 of Pins/Row	Dimension Information				
	A	B	C	D	F		A	B	C	D	F
05	8.00	16.00	12.20	17.50	14.20	16	30.00	38.00	34.20	39.50	36.20
06	10.00	18.00	14.20	19.50	16.20	17	32.00	40.00	36.20	41.50	38.20
07	12.00	20.00	16.20	21.50	18.20	18	34.00	42.00	38.20	43.50	40.20
08	14.00	22.00	18.20	23.50	20.20	19	36.00	44.00	40.20	45.50	42.20
09	16.00	24.00	20.20	25.50	22.20	20	38.00	46.00	42.20	47.50	44.20
10	18.00	26.00	22.20	27.50	24.20	21	40.00	48.00	44.20	49.50	46.20
11	20.00	28.00	24.20	29.50	26.20	22	42.00	50.00	46.20	51.50	48.20
12	22.00	30.00	26.20	31.50	28.20	23	44.00	52.00	48.20	53.50	50.20
13	24.00	32.00	28.20	33.50	30.20	24	46.00	54.00	50.20	55.50	52.20
14	26.00	34.00	30.20	35.50	32.20	25	48.00	56.00	52.20	57.50	54.20
15	28.00	36.00	32.20	37.50	34.20						

## Ordering Information

MMFB218 -	XX	XX	A	XXX
No. of Pins per Row	Standard Plating	Standard Plating	Pin Length ( B / E )	
05-25	02 :Gold Flash	Selective Plating	001 :B=14.20, E=3.00	
	01 :Tin	05 :Gold Flash / Tin	Selective Length	
			Custom Length Available	

\* Standard Packaging: Tube

Due to technical progress, all designs, Specifications and components are subject to change without notice