

Pitch:2.00X2.00mm(0.079"X0.079")
 Box Header Dual Rows Dip Type

MXCONN
 MFFA213 Series

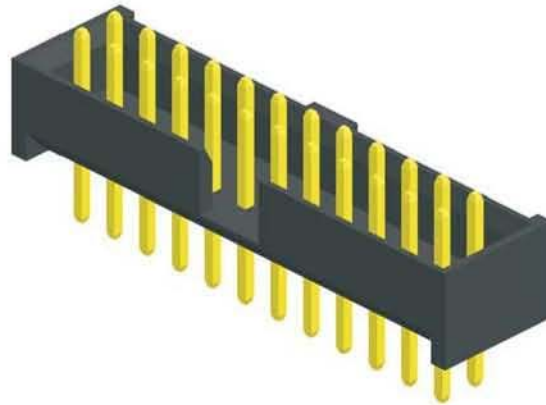
2.00 Male Dip Type

Specifications

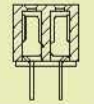
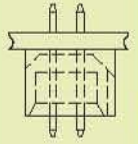
- Current Rating: 2.0 Ampere
- Insulation Resistance: 1000MΩ Min
- Dielectric Withstanding: 500V AC
- Contact Resistance: 20mΩ Max
- Operating Temperature: -40°C to +105°C

Materials

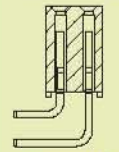
- Contact Material: Brass
- Insulation Material: polyester,UL 94V-0 LCP



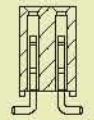
Mating with



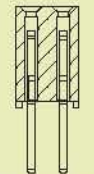
MFFA2XX



MMFB207



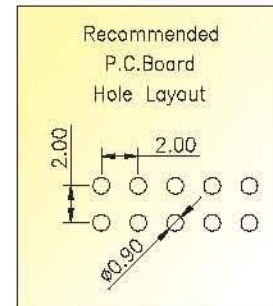
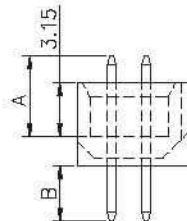
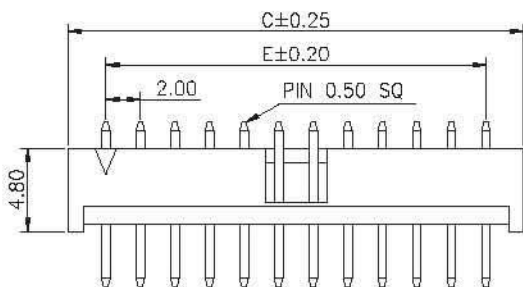
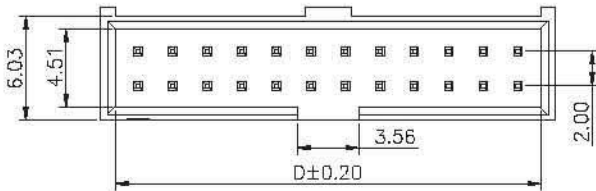
MFFC215



MFFA204



MFFC2XX



No. of Pins/Row	Dimension Information			No. of Pins/Row	Dimension Information			No. of Pins/Row	Dimension Information			No. of Pins/Row	Dimension Information		
	C	D	E		C	D	E		C	D	E		C	D	E
04	10.38	8.62	6.00	10	22.38	20.62	18.00	16	34.38	32.62	30.00	22	46.38	44.62	42.00
05	12.38	10.62	8.00	11	24.38	22.62	20.00	17	36.38	34.62	32.00	23	48.38	46.62	44.00
06	14.38	12.62	10.00	12	26.38	24.62	22.00	18	38.38	36.62	34.00	24	50.38	48.62	46.00
07	16.38	14.62	12.00	13	28.38	26.62	24.00	19	40.38	38.62	36.00	25	52.38	50.62	48.00
08	18.38	16.62	14.00	14	30.38	28.62	26.00	20	42.38	40.62	38.00				
09	20.38	18.62	16.00	15	32.38	30.62	28.00	21	44.38	42.62	40.00				

Ordering Information

- MMFA213 - **XX** **XX** A **XXX**
- No. of Pins per Row: 04-25
 - Standard Plating: 02 :Gold Flash
 - Selective Plating: 01 :Tin
 - 05 :Gold Flash / Tin
 - Pin Length (A / B): 001 :A=4.67,B=3.23
 - Selective Length
 - Custom Length Available

* Standard Packaging: Tube