

Pitch:1.27X1.27mm(0.05"X0.05")
 Box Header Of Various Heights Series S.M.T Type

MXCONN
 MMEC2XX Series

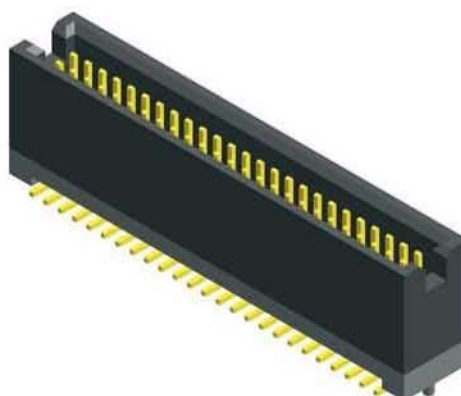
1.27 Male S.M.T Type

Specifications

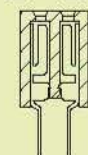
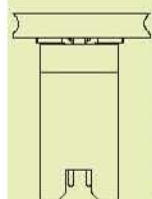
- Current Rating: 1.0 Ampere
- Insulation Resistance: 1000MΩ Min
- Dielectric Withstanding: 300V AC
- Contact Resistance: 20mΩ Max
- Operating Temperature: -40°C to +105°C

Materials

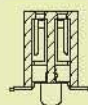
- Contact Material: Phosphor Bronze
- Insulation Material: Polyester,UL 94V-0 LCP



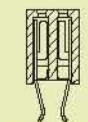
Mating with



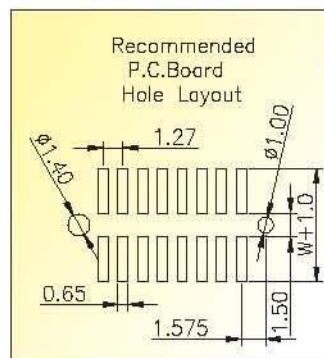
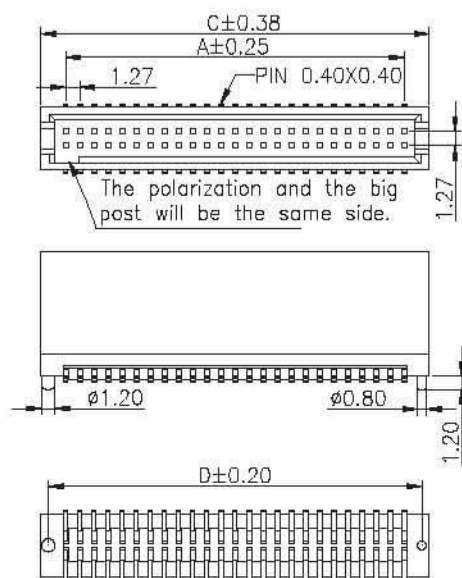
MFEA202



MFEC202



MFEE202



No. of Pins/Row	Dimension Information			No. of Pins/Row	Dimension Information			No. of Pins/Row	Dimension Information			No. of Pins/Row	Dimension Information		
	A	C	D		A	C	D		A	C	D		A	C	D
05	5.08	9.55	8.23	14	16.51	20.98	19.68	23	27.94	32.41	31.09	32	39.37	43.84	42.52
06	6.35	10.82	9.50	15	17.78	22.25	20.93	24	29.21	33.68	32.36	33	40.64	45.11	43.79
07	7.62	12.09	10.77	16	19.05	23.52	22.18	25	30.48	34.95	33.63	34	41.91	46.38	45.06
08	8.89	13.36	12.04	17	20.32	24.79	23.43	26	31.75	36.22	34.90	35	43.18	47.65	46.33
09	10.16	14.63	13.31	18	21.59	26.06	24.68	27	33.02	37.49	36.17	36	44.45	48.92	47.60
10	11.43	15.90	14.58	19	22.86	27.33	25.93	28	34.29	38.76	37.44	37	45.72	50.19	48.87
11	12.70	17.17	15.85	20	24.13	28.60	27.18	29	35.56	40.03	38.71	38	46.99	51.46	50.14
12	13.97	18.44	17.12	21	25.40	29.87	28.43	30	36.83	41.30	39.98	39	48.26	52.73	51.41
13	15.24	19.71	18.39	22	26.67	31.14	29.68	31	38.10	42.57	41.25	40	49.53	54.00	52.68

Ordering Information

MMEC2 XX

- HEIGHT OPTION (H) Standard
 43 :H=09.20 44 :H=07.00
 HEIGHT OPTION (H) Selective
 45 :H=08.70 58 :H=12.20
 46 :H=13.60 59 :H=16.90
 47 :H=13.20 62 :H=08.40
 48 :H=12.10 64 :H=08.20
 49 :H=07.40 65 :H=15.30
 50 :H=10.20 66 :H=11.50
 51 :H=07.60 67 :H=15.60
 53 :H=08.30 68 :H=16.60
 54 :H=09.50 69 :H=21.20
 55 :H=09.00

- XX

- No. of Pins per Row
 05~40

XX

- Standard Plating
 01 :Tin
 02 :Gold Flash
 Selective Plating
 05 :Gold Flash / Tin

B

- MMEC243...B
 MMEC244...B

XXX

- Pin Length (B / W)
 001 :B=11.5,W=6.30
 001 :B=9.30,W=6.30
 Selective Length
 Custom Length Available

* Standard Packaging: Tube