

Pitch:1.27X1.27mm(0.05"X0.05")  
Box Header Right Angle Dip Type

**MXCONN**  
MMEB2XX Series

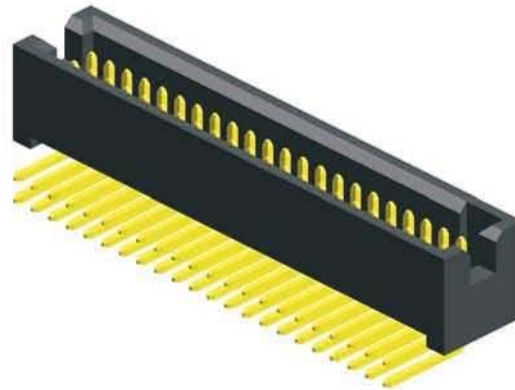
1.27 Male Dip Type

**Specifications**

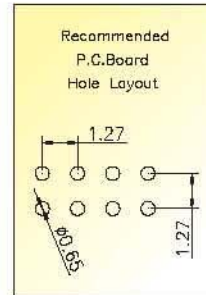
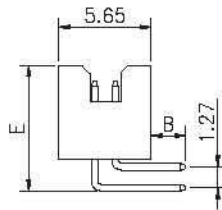
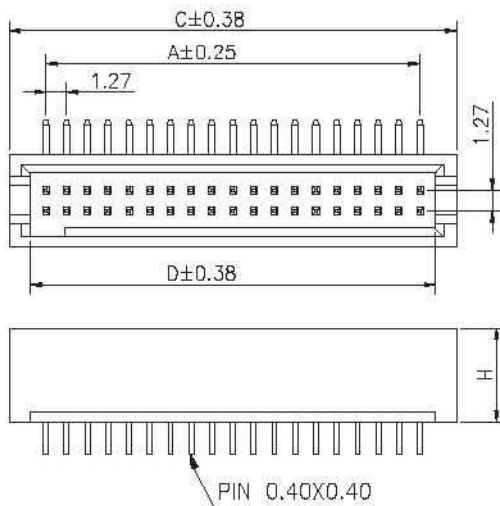
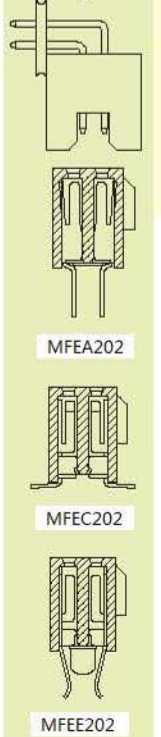
Current Rating: 1.0 Ampere  
Insulation Resistance: 1000MΩ Min  
Dielectric Withstanding: 300V AC  
Contact Resistance: 20mΩ Max  
Operating Temperature: -40°C to +105°C

**Materials**

Contact Material: Brass  
Insulation Material: Polyester,UL 94V-0  
NYLON 6T



Mating with



No. of Pins/Row	Dimension Information			No. of Pins/Row	Dimension Information			No. of Pins/Row	Dimension Information			No. of Pins/Row	Dimension Information		
	A	C	D		A	C	D		A	C	D		A	C	D
05	5.08	9.55	6.95	19	22.86	27.33	24.73	33	40.64	45.11	42.51	47	58.42	62.89	60.29
06	6.35	10.82	8.22	20	24.13	28.60	26.00	34	41.91	46.38	43.78	48	59.69	64.16	61.56
07	7.62	12.09	9.49	21	25.40	29.87	27.27	35	43.18	47.65	45.05	49	60.96	65.43	62.83
08	8.89	13.36	10.76	22	26.67	31.14	28.54	36	44.45	48.92	46.32	50	62.23	66.70	64.10
09	10.16	14.63	12.03	23	27.94	32.41	29.81	37	45.72	50.19	47.59	51	63.50	67.97	65.37
10	11.43	15.9	13.3	24	29.21	33.68	31.08	38	46.99	51.46	48.86	52	64.77	69.24	66.64
11	12.7	17.17	14.57	25	30.48	34.95	32.35	39	48.26	52.73	50.13	53	66.04	70.51	67.91
12	13.97	18.44	15.84	26	31.75	36.22	33.62	40	49.53	54.00	51.40	54	67.31	71.78	69.18
13	15.24	19.71	17.11	27	33.02	37.49	34.89	41	50.80	55.27	52.67	55	68.58	73.05	70.45
14	16.51	20.98	18.38	28	34.29	38.76	36.16	42	52.07	56.54	53.94	56	69.85	74.32	71.72
15	17.78	22.25	19.65	29	35.56	40.03	37.43	43	53.34	57.81	55.21	57	71.12	75.59	72.99
16	19.05	23.52	20.92	30	36.83	41.30	38.70	44	54.61	59.08	56.48	58	72.39	76.86	74.26
17	20.32	24.79	22.19	31	38.10	42.57	39.97	45	55.88	60.35	57.75	59	73.66	78.13	75.53
18	21.59	26.06	23.46	32	39.37	43.84	41.24	46	57.15	61.62	59.02	60	74.93	79.40	76.80

**Ordering Information**

MMEB2	XX	-	XX	XX	A	XXX
	HEIGHT OPTION (H)		No. of Pins per Row	Standard Plating		Pin Length ( E / B )
	41 :H=5.70		05~60	02 :Gold Flash	MMEB241 ...A	002 :E=7.67,B=2.75
	42 :H=7.30			Selective Plating	MMEB242 ...A	001 :E=9.27,B=2.75
				01 :Tin		Selective Length
				05 :Gold Flash / Tin		Custom Length Available

\* Standard Packaging: Tube