

Pitch:1.27X1.27mm(0.05"X0.05")
Box Header Of Various Heights Series Dip Type

MXCONN
MMEA2XX Series

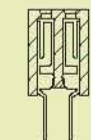
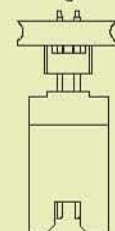
Specifications

Current Rating: 1.0 Ampere
Insulation Resistance: 1000MΩ Min
Dielectric Withstanding: 300V AC
Contact Resistance: 20mΩ Max
Operating Temperature: -40°C to +105°C

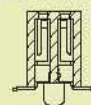
Materials

Contact Material: Phosphor Bronze
Insulation Material: Polyester,UL 94V-0
LCP

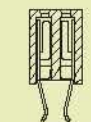
Mating with



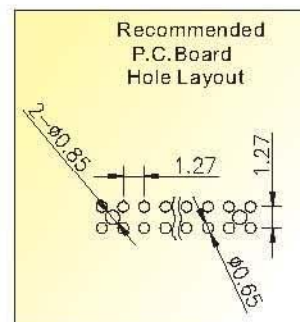
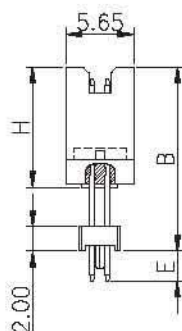
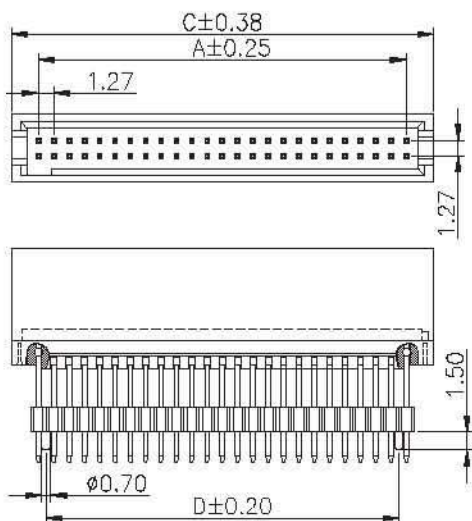
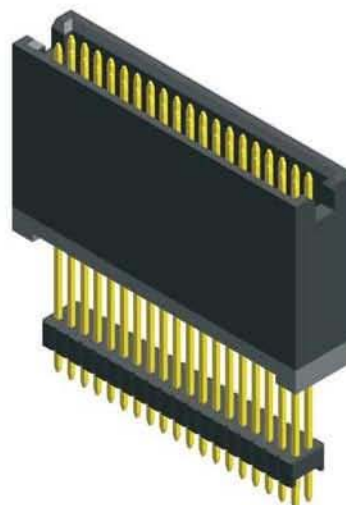
MFEA202



MFEC202



MFEE202



No. of Pins/Row	Dimension Information			No. of Pins/Row	Dimension Information			No. of Pins/Row	Dimension Information			No. of Pins/Row	Dimension Information		
	A	C	D		A	C	D		A	C	D		A	C	D
05	5.08	9.55	3.81	14	16.51	20.98	15.24	23	27.94	32.41	26.67	32	39.37	43.84	38.10
06	6.35	10.82	5.08	15	17.78	22.25	16.51	24	29.21	33.68	27.94	33	40.64	45.11	39.37
07	7.62	12.09	6.35	16	19.05	23.52	17.78	25	30.48	34.95	29.21	34	41.91	46.38	40.64
08	8.89	13.36	7.62	17	20.32	24.79	19.05	26	31.75	36.22	30.48	35	43.18	47.65	41.91
09	10.16	14.63	8.89	18	21.59	26.06	20.32	27	33.02	37.49	31.75	36	44.45	48.92	43.18
10	11.43	15.90	10.16	19	22.86	27.33	21.59	28	34.29	38.76	33.02	37	45.72	50.19	44.45
11	12.70	17.17	11.43	20	24.13	28.60	22.86	29	35.56	40.03	34.29	38	46.99	51.46	45.72
12	13.97	18.44	12.70	21	25.40	29.87	24.13	30	36.83	41.30	35.56	39	48.26	52.73	46.99
13	15.24	19.71	13.97	22	26.67	31.14	25.40	31	38.10	42.57	36.83	40	49.53	54.00	48.26

Ordering Information

MMEA2	XX	XX	XX	X	XXX
HEIGHT OPTION (H) Standard		No. of Pins per Row	Standard Plating	A :W/O POST	Pin Length (B / E)
88	:H=15.90	05-40	01 :Tin	B :WITH POST	MMEA288A 002 :B=24.8,E=2.50
89	:H=15.90(With Post)		02 :Gold Flash		MMEA289B 001 :B=17.9,E=3.00
HEIGHT OPTION (H) Standard			Selective Plating		Selective Length
85	:H=09.30		05 :Gold Flash / Tin		Custom Length Available
90	:H=11.50				

* Standard Packaging: Tube

Due to technical progress, all designs, Specifications and components are subject to change without notice